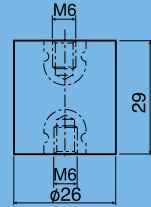


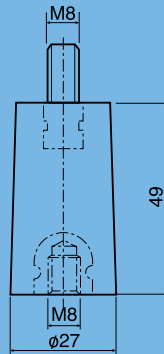
POTPORNI IZOLATORI ZA UNUTRAŠNJU MONTAŽU



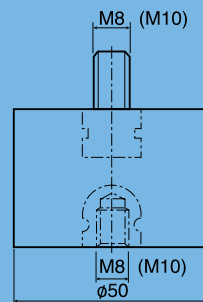
PI - 1 (Ø27x30)



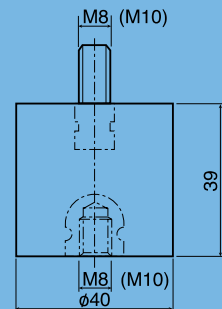
PI - 2 (Ø27x50)



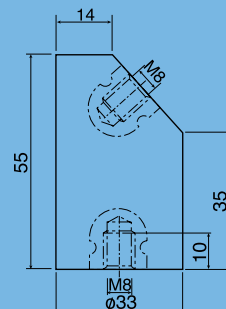
PI - 2 (Ø50x35)



PI - 2 (Ø40x38)

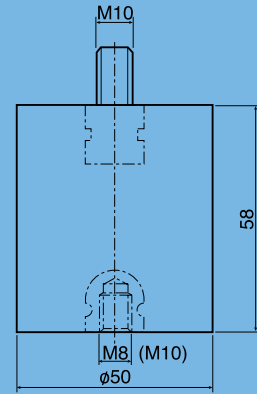


PI - 2 (Ø33x55)

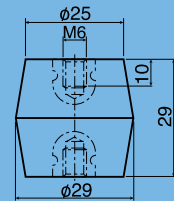




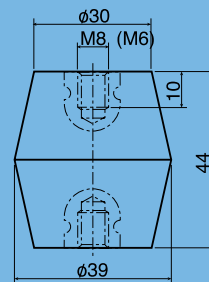
PI - 2 (Ø50x60)



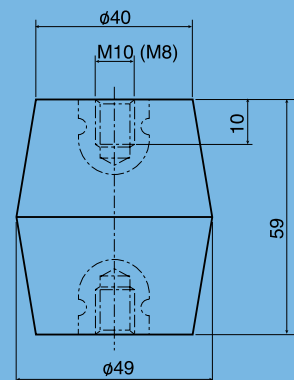
PI - 3 (Ø30x30)



PI - 3 (Ø45x45)



PI - 3 (Ø50x60)



Koriste se kao nosači sabirnica u NN komandno-mernim i razvodnim oramanima.

Nazivni napon: 1kV

Najviši pogonski napon: 1,2kV

Ispitni napon: 50Hz, 1 min. 3kV

Temperaturna izdržljivost: od -45 do 130 °C.

Vrsta izolacije: poliesterska i poliuretanska smola.